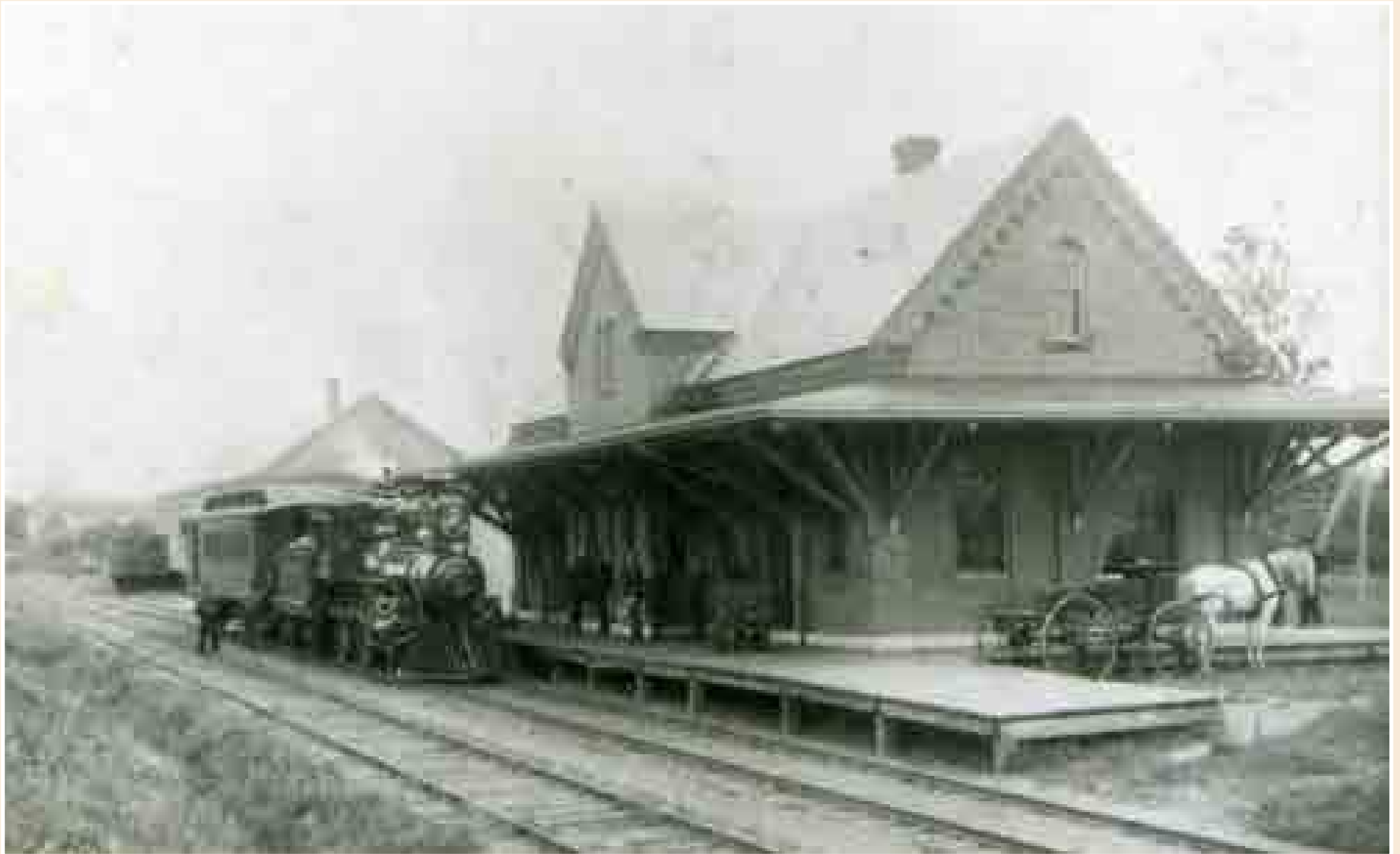


# Historic Railroad Scenes 2010 Calendar

Franklin County, Massachusetts





### N.Y., NEW HAVEN & HARTFORD RR STATION - TURNERS FALLS - CA. 1890

Pictured above is the New York, New Haven and Hartford RR station and freight house in Turners Falls, which was located along Montague City Road, south of 11th Street. The New Haven & Northampton RR, which came to Turners in 1881, was changed to the NY, NH & H after a consolidation. This station is identical to those in Conway and South Deerfield and many others on the New Haven line. In 1925, the Boston & Maine RR (B&M) made arrangements to run over the New Haven line into Turners Falls, since the B&M bridge over the Connecticut River was deemed unsafe for trains. In 1980 the B&M abandoned service to Turners Falls and the route is now a fine rail trail.

# JANUARY 2010

Sunday	Monday	Tuesday	Wednesday	Thursday	Friday	Saturday
<p>DECEMBER 2009</p> <p>S M T W T F S</p> <p>1 2 3 4 5</p> <p>6 7 8 9 10 11 12</p> <p>13 14 15 16 17 18 19</p> <p>20 21 22 23 24 25 26</p> <p>27 28 29 30 31</p>	<p>FEBRUARY 2010</p> <p>S M T W T F S</p> <p>1 2 3 4 5 6</p> <p>7 8 9 10 11 12 13</p> <p>14 15 16 17 18 19 20</p> <p>21 22 23 24 25 26 27</p> <p>28</p>				1	2
					New Year's Day	
3	4	5	6	7	8	9
10	11	12	13	14	15	16
17	18	19	20	21	22	23
	Martin Luther King, Jr. Day					
24	25	26	27	28	29	30
31						



### A STEAM PILE DRIVER - MONTAGUE CITY ROAD UNDERPASS - GREENFIELD - CA. 1910

We are looking east in south Greenfield at the Vermont and Massachusetts RR. The men were probably driving pilings to strengthen the embankment next to the Deerfield River. The tower in the background is known as Turners Falls Junction and was the only tower ever built in the busy rail city of Greenfield. Opposite the tower is the T.F. Junction Station and the switch that led to Turners Falls. The line to Turners Falls was abandoned in 1925 because of bridge failure, but the switch is still used to service WTE Recycling, which is the only current user of rail in Greenfield. The tower was picked up and moved into East Deerfield where it was used by signal maintainers into the 1950's.

# FEBRUARY 2010

Sunday	Monday	Tuesday	Wednesday	Thursday	Friday	Saturday
<p>JANUARY 2010</p> <p>S M T W T F S</p> <p>1 2</p> <p>3 4 5 6 7 8 9</p> <p>10 11 12 13 14 15 16</p> <p>17 18 19 20 21 22 23</p> <p>24 25 26 27 28 29 30</p> <p>31</p>	1	2	3	4	5	6
7	8	9	10	11	12	13
14	15	16	17	18	19	20
Valentine's Day	President's Day					
21	22	23	24	25	26	27
28						<p>MARCH 2010</p> <p>S M T W T F S</p> <p>1 2 3 4 5 6</p> <p>7 8 9 10 11 12 13</p> <p>14 15 16 17 18 19 20</p> <p>21 22 23 24 25 26 27</p> <p>28 29 30 31</p>



### HOOSAC TUNNEL STATION, ROWE - AUG 26, 1934

This group was part of the first organized railroad fan excursion in the U.S. The tour left Boston that morning in two special cars for the 135 mile trip to Hoosac Tunnel Station. One car was air conditioned and the other was an open-platform wooden car. From here, the passengers boarded the "Hoot, Toot & Whistle" (Hoosac Tunnel & Wilmington RR) northbound to Vermont, which was this day operating the first passenger train on the line since the great flood of November 1927. Needless to say, the visitors were treated like royalty on the excursion and also by residents of Readsboro and Wilmington, where they were wined, dined and transported in private automobiles for those interested in a dairy farm tour.

# MARCH 2010

Sunday	Monday	Tuesday	Wednesday	Thursday	Friday	Saturday
FEBRUARY 2010 S M T W T F S 1 2 3 4 5 6 7 8 9 10 11 12 13 14 15 16 17 18 19 20 21 22 23 24 25 26 27 28	1	2	3	4	5	6
7	8	9	10	11	12	13
14	15	16	17	18	19	20
Daylight Savings Time Begins			St. Patrick's Day			First Day of Spring
21	22	23	24	25	26	27
28	29	30	31			APRIL 2010 S M T W T F S 1 2 3 4 5 6 7 8 9 10 11 12 13 14 15 16 17 18 19 20 21 22 23 24 25 26 27 28 29 30
		Passover				



### MILLERS FALLS STATION - JULY 10, 1927

Here is an unusual view of a frequently photographed railroad structure. This union station was built in 1884 to serve the Fitchburg Railroad and Central Vermont Railroad (railway after the 1896 bankruptcy). The Central Vermont agent and his family would live upstairs. The Boston & Maine employed telegraphers around the clock here and the station would tremble to perhaps 80 trains a day, including light engines returning from helper duty on the Farley grade and Royalston Hill. In 1963, the station was cosmetically damaged in a massive B&M freight train wreck, the tenant evicted and the building demolished.



# APRIL 2010

Sunday	Monday	Tuesday	Wednesday	Thursday	Friday	Saturday
<p>MARCH 2010</p> <p>S M T W T F S</p> <p>1 2 3 4 5 6</p> <p>7 8 9 10 11 12 13</p> <p>14 15 16 17 18 19 20</p> <p>21 22 23 24 25 26 27</p> <p>28 29 30 31</p>				1	2	3
4	5	6	7	8	9	10
Easter						
11	12	13	14	15	16	17
18	19	20	21	22	23	24
	Patriot's Day					
25	26	27	28	29	30	<p>MAY 2010</p> <p>S M T W T F S</p> <p>1</p> <p>2 3 4 5 6 7 8</p> <p>9 10 11 12 13 14 15</p> <p>16 17 18 19 20 21 22</p> <p>23 24 25 26 27 28 29</p> <p>30 31</p>



### STREET CAR ON BRIDGE OF FLOWERS, SHELBURNE FALLS - CA. 1910

Car No. 21 was built in 1894 for the Farmington Street Railway in Connecticut, and is shown crossing the Deerfield River over what is now “The Bridge of Flowers” in Shelburne Falls. The 18.5’ car was built by Jackson & Sharpe and rode on a four wheel Peckham truck powered by 2 GE800 motors. The car is crossing from Shelburne into Buckland headed for the B&M and NYNH&H union station. The poured concrete bridge was built in 1908 at a cost of \$21,641. The trolley ran 6.95 miles from the center of Colrain to the still standing 1867 freight house in Buckland. Adult fare was 15 cents and the trip took about 40 minutes. The SF&C Street Railway shut down in 1927, but you can still ride the 1896 “Big Car” No.10 at the Shelburne Falls Trolley Museum, in the Buckland rail yard, weekends and holidays in the warmer months of the year.

# MAY 2010

Sunday	Monday	Tuesday	Wednesday	Thursday	Friday	Saturday
<small>APRIL 2010</small> <small>S M T W T F S</small> 1 2 3 4 5 6 7 8 9 10 11 12 13 14 15 16 17 18 19 20 21 22 23 24 25 26 27 28 29 30	<small>JUNE 2010</small> <small>S M T W T F S</small> 1 2 3 4 5 6 7 8 9 10 11 12 13 14 15 16 17 18 19 20 21 22 23 24 25 26 27 28 29 30					1
2	3	4	5	6	7	8
9	10	11	12	13	14	15
Mother's Day						
16	17	18	19	20	21	22
23	24	25	26	27	28	29
30	31 Memorial Day					



### NEW SALEM DEPOT - CA. 1890

A postcard view of the New Salem Station circa 1890. The Springfield, Athol and Northeastern (SA&NE) RR opened for business in 1873. Like the New Haven, the SA&NE depots were built in cookie cutter fashion and this one is very similar to South Athol, North Dana, Greenwich and perhaps others. The SA&NE was swallowed up by the Boston & Albany (B&A) in July 1880 and the north end of the line was abandoned in 1935 to allow filling of the Quabbin Reservoir. The B&A's Athol branch was long known, and still remembered, as the Rabbit Line. The presence of two baggage carts here suggests a busy station.

# JUNE 2010

Sunday	Monday	Tuesday	Wednesday	Thursday	Friday	Saturday
<p>MAY 2010</p> <p>S M T W T F S</p> <p>1</p> <p>2 3 4 5 6 7 8</p> <p>9 10 11 12 13 14 15</p> <p>16 17 18 19 20 21 22</p> <p>23 24 25 26 27 28 29</p> <p>30 31</p>		1	2	3	4	5
6	7	8	9	10	11	12
13	14	15	16	17	18	19
20	21	22	23	24	25	26
Father's Day	First Day of Summer					
27	28	29	30			<p>JULY 2010</p> <p>S M T W T F S</p> <p>1 2 3</p> <p>4 5 6 7 8 9 10</p> <p>11 12 13 14 15 16 17</p> <p>18 19 20 21 22 23 24</p> <p>25 26 27 28 29 30 31</p>



### TWO FAMOUS B&M FACES

On the left is E7A No.3820, delivered in April 1949, with the photograph reportedly taken in LaGrange, Illinois, at the home of the builder, the Electro-Motive Division of General Motors, (known worldwide as EMD). This engine was wrecked at Nashua in an unexplained overspeed incident and scrapped at 5 years of age. The Flying Yankee, on the other hand, is still going strong (more or less) at age 75. This engine served the B&M well from 1935 until retired in 1957. It is now undergoing slow, but steady restoration in Lincoln, New Hampshire. This photograph was apparently taken on the southbound track in Greenfield.

# JULY 2010

Sunday	Monday	Tuesday	Wednesday	Thursday	Friday	Saturday
<p>JUNE 2010</p> <p>S M T W T F S</p> <p>1 2 3 4 5</p> <p>6 7 8 9 10 11 12</p> <p>13 14 15 16 17 18 19</p> <p>20 21 22 23 24 25 26</p> <p>27 28 29 30</p>	<p>AUGUST 2010</p> <p>S M T W T F S</p> <p>1 2 3 4 5 6 7</p> <p>8 9 10 11 12 13 14</p> <p>15 16 17 18 19 20 21</p> <p>22 23 24 25 26 27 28</p> <p>29 30 31</p>			1	2	3
4	5	6	7	8	9	10
Independence Day						
11	12	13	14	15	16	17
18	19	20	21	22	23	24
25	26	27	28	29	30	31



### EAST DEERFIELD ENGINE HOUSE - CA. 1980

David and Goliath. A 600 HP EMD SW1 switcher No.1127 is parked next to what were the B&M's last, and most powerful (at 3,000 HP) diesel-electric locomotives. The 1127 arrived on the B&M in 1953 and the 18 GP40-2's arrived in early 1978. The B&M equipped the 1127 with multiple-unit capability and one of the most entertaining Franklin County scenes was watching the tiny 1127 lead three larger engines up the valley from Mount Tom, trailing 100 empty coal hoppers, as required by a multiple-unit rule that the smallest HP unit had to be the leader. EMD diesel-electrics have long lives and the 1127, 305 & 312 may yet be in service somewhere in the USA in 2010.



# AUGUST 2010

Sunday	Monday	Tuesday	Wednesday	Thursday	Friday	Saturday																																																																																				
1	2	3	4	5	6	7																																																																																				
8	9	10	11	12	13	14																																																																																				
15	16	17	18	19	20	21																																																																																				
22	23	24	25	26	27	28																																																																																				
29	30	31			<p style="text-align: center;">JULY 2010</p> <table border="1"> <thead> <tr> <th>S</th> <th>M</th> <th>T</th> <th>W</th> <th>T</th> <th>F</th> <th>S</th> </tr> </thead> <tbody> <tr> <td></td> <td></td> <td></td> <td>1</td> <td>2</td> <td>3</td> <td></td> </tr> <tr> <td>4</td> <td>5</td> <td>6</td> <td>7</td> <td>8</td> <td>9</td> <td>10</td> </tr> <tr> <td>11</td> <td>12</td> <td>13</td> <td>14</td> <td>15</td> <td>16</td> <td>17</td> </tr> <tr> <td>18</td> <td>19</td> <td>20</td> <td>21</td> <td>22</td> <td>23</td> <td>24</td> </tr> <tr> <td>25</td> <td>26</td> <td>27</td> <td>28</td> <td>29</td> <td>30</td> <td>31</td> </tr> </tbody> </table>	S	M	T	W	T	F	S				1	2	3		4	5	6	7	8	9	10	11	12	13	14	15	16	17	18	19	20	21	22	23	24	25	26	27	28	29	30	31	<p style="text-align: center;">SEPTEMBER 2010</p> <table border="1"> <thead> <tr> <th>S</th> <th>M</th> <th>T</th> <th>W</th> <th>T</th> <th>F</th> <th>S</th> </tr> </thead> <tbody> <tr> <td></td> <td></td> <td></td> <td>1</td> <td>2</td> <td>3</td> <td>4</td> </tr> <tr> <td>5</td> <td>6</td> <td>7</td> <td>8</td> <td>9</td> <td>10</td> <td>11</td> </tr> <tr> <td>12</td> <td>13</td> <td>14</td> <td>15</td> <td>16</td> <td>17</td> <td>18</td> </tr> <tr> <td>19</td> <td>20</td> <td>21</td> <td>22</td> <td>23</td> <td>24</td> <td>25</td> </tr> <tr> <td>26</td> <td>27</td> <td>28</td> <td>29</td> <td>30</td> <td></td> <td></td> </tr> </tbody> </table>	S	M	T	W	T	F	S				1	2	3	4	5	6	7	8	9	10	11	12	13	14	15	16	17	18	19	20	21	22	23	24	25	26	27	28	29	30		
S	M	T	W	T	F	S																																																																																				
			1	2	3																																																																																					
4	5	6	7	8	9	10																																																																																				
11	12	13	14	15	16	17																																																																																				
18	19	20	21	22	23	24																																																																																				
25	26	27	28	29	30	31																																																																																				
S	M	T	W	T	F	S																																																																																				
			1	2	3	4																																																																																				
5	6	7	8	9	10	11																																																																																				
12	13	14	15	16	17	18																																																																																				
19	20	21	22	23	24	25																																																																																				
26	27	28	29	30																																																																																						



### GREENFIELD STATION - LOOKING NORTH UNDER MAIN STREET

Hopefully that news butcher is not about to step on the rail. Standing between the rails, or stepping on the railhead, are definitely prohibited acts. The 1881 Greenfield Union Station for many years was a meal stop, as it was conveniently located about halfway between Boston and the Hudson River. Although wearing an official uniform, the news butcher shown here was probably an employee of the Armstrong News Company. He would walk through passenger trains with his tray selling newspapers, magazines, beverages like Moxie and milk, and snacks such as candy bars and Cracker Jacks. The most famous train news butcher of all, Thomas Edison, had his hearing permanently impaired by a bad-tempered railway conductor.

# SEPTEMBER 2010

Sunday	Monday	Tuesday	Wednesday	Thursday	Friday	Saturday
AUGUST 2010 S M T W T F S 1 2 3 4 5 6 7 8 9 10 11 12 13 14 15 16 17 18 19 20 21 22 23 24 25 26 27 28 29 30 31			1	2	3	4
5	6 Labor Day	7	8	9 Rosh Hashanah	10	11
12	13	14	15	16	17	18 Yom Kippur
19	20	21	22	23 First Day of Autumn	24	25
26	27	28	29	30		OCTOBER 2010 S M T W T F S 1 2 3 4 5 6 7 8 9 10 11 12 13 14 15 16 17 18 19 20 21 22 23 24 25 26 27 28 29 30 31



### WHATELY B&M STATION AND THE EAST WHATELY POST OFFICE - CA 1928

Located just a few short miles from the New Haven rail junction and a large B&M station at South Deerfield, along with another at North Hatfield, Whately must have been a very quiet place to work (except perhaps during harvest season). The New Haven RR also had a depot in Whately. In the summer of 1928, No.707 would stop for you at 8:01 A.M. weekdays and deliver you in Greenfield 19 minutes later. Generally speaking you can tell the direction of a train by its number. Odd numbers are north and west. Even numbers are south and east. This still holds true on Amtrak in 2010.

# OCTOBER 2010

Sunday	Monday	Tuesday	Wednesday	Thursday	Friday	Saturday
SEPTEMBER 2010 S M T W T F S 1 2 3 4 5 6 7 8 9 10 11 12 13 14 15 16 17 18 19 20 21 22 23 24 25 26 27 28 29 30	NOVEMBER 2010 S M T W T F S 1 2 3 4 5 6 7 8 9 10 11 12 13 14 15 16 17 18 19 20 21 22 23 24 25 26 27 28 29 30				1	2
3	4	5	6	7	8	9
10	11 Columbus Day	12	13	14	15	16
17	18	19	20	21	22	23
24	25	26	27	28	29	30
31 Halloween						



### **BUILDING THE RIVER STREET TRESTLE - GREENFIELD**

Pictured above is the circa 1881 bridge over the Green River, at Laurel Street (near Dunkin' Donuts) - part of the new, and present, route to Shelburne Falls and points beyond. It replaced the older and more southerly rail line which passed through Greenfield near Meridian Street. The bridge was then rebuilt in 1918 to accommodate the new 2-10-2 steam locomotives (shown on the cover). There are two tracks on the current bridge, but only one is still in service.

# NOVEMBER 2010

Sunday	Monday	Tuesday	Wednesday	Thursday	Friday	Saturday
<p>OCTOBER 2010</p> <p>S M T W T F S</p> <p>1 2</p> <p>3 4 5 6 7 8 9</p> <p>10 11 12 13 14 15 16</p> <p>17 18 19 20 21 22 23</p> <p>24 25 26 27 28 29 30</p> <p>31</p>	1	2	3	4	5	6
7	8	9	10	11	12	13
Daylight Savings Time Ends				Veterans' Day		
14	15	16	17	18	19	20
21	22	23	24	25	26	27
				Thanksgiving Day		
28	29	30				<p>DECEMBER 2010</p> <p>S M T W T F S</p> <p>1 2 3 4</p> <p>5 6 7 8 9 10 11</p> <p>12 13 14 15 16 17 18</p> <p>19 20 21 22 23 24 25</p> <p>26 27 28 29 30 31</p>



### “I’M THE LARGEST LOCO IN THE WORLD GOING TO STEAMTOWN” - 1964

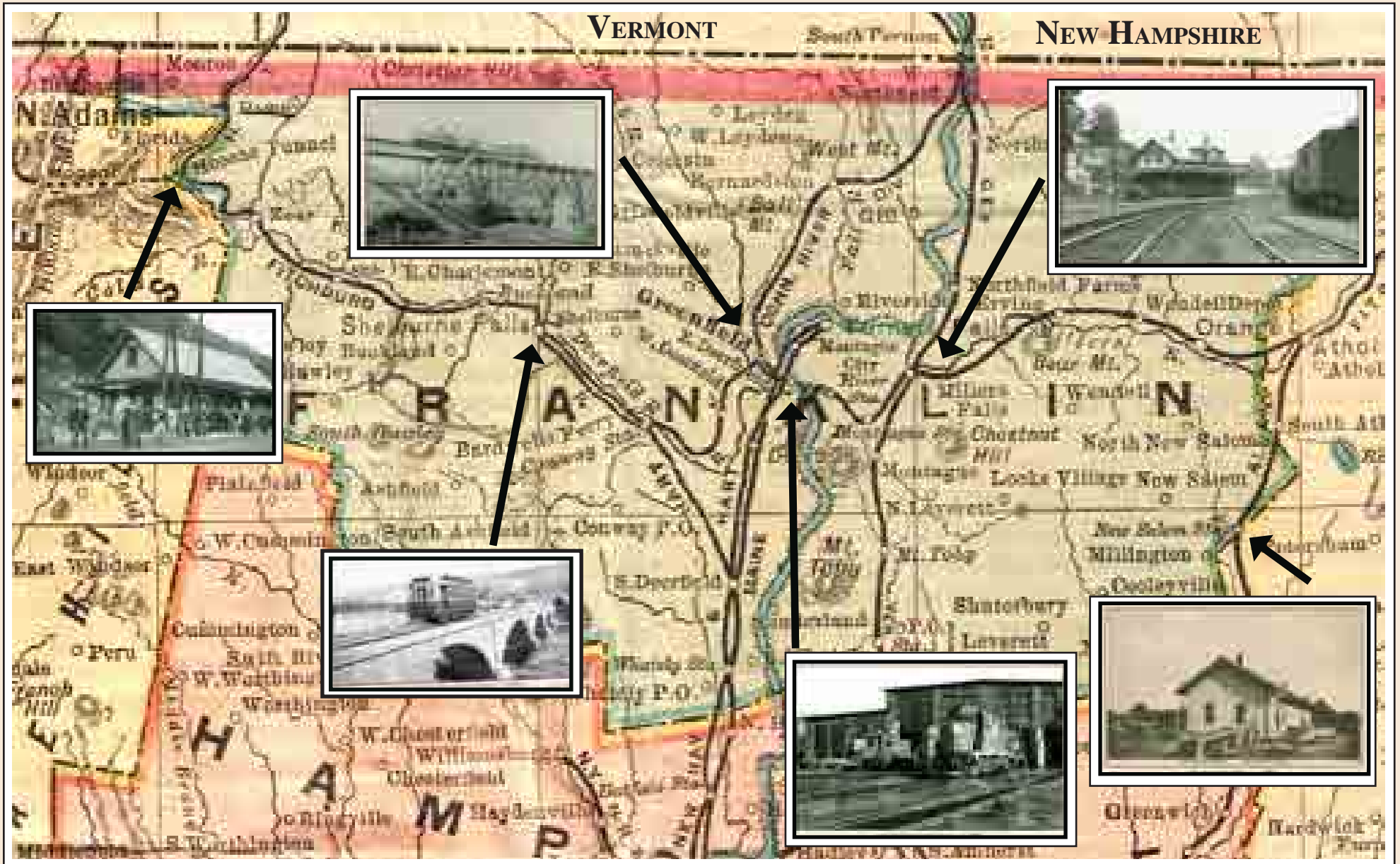
The Union Pacific Big Boy No.4012 is waiting at the Greenfield Station in September, 1964 on the northbound track for the 2nd trick Greenfield switcher to haul it over to East Deerfield for the night. The 4012 was then hauled to Steamtown in Bellows Falls, VT via Keene, NH (it was too large for the Bellows Falls Tunnel). Twenty years later , in November 1984, the machine spent time in Greenfield again on its way to Scranton, PA, after the Steamtown museum closed in Vermont. This time it passed through the enlarged Bellows Falls Tunnel, which was fortuitous, as the rails to Keene were now gone. Big Boys were a spectacular operating success that could move 25 car passenger trains at 70 mph or tackle a 100 car fruit block with ease in the mountains of Wyoming. Of the 25 Big Boys built, 8 have been preserved and you can still visit the 4012 today in Scranton.



# DECEMBER 2010

Sunday	Monday	Tuesday	Wednesday	Thursday	Friday	Saturday
NOVEMBER 2010 S M T W T F S 1 2 3 4 5 6 7 8 9 10 11 12 13 14 15 16 17 18 19 20 21 22 23 24 25 26 27 28 29 30			1	2	3	4
5	6	7	8	Hanukkah 9	10	11
12	13	14	15	16	17	18
19	20	21	22	23	24	25
26	27	First Day of Winter 28	29	30	31	Christmas Day
					New Year's Eve	JANUARY 2011 S M T W T F S 1 2 3 4 5 6 7 8 9 10 11 12 13 14 15 16 17 18 19 20 21 22 23 24 25 26 27 28 29 30 31

# MAP OF FRANKLIN COUNTY - 1899



The 1899 map shows the rail stations (small circles) illustrated on this calendar along with a sampling of photos. You can see why Franklin County's railroads are important - three major lines passed through here. Most of these railroads still exist. The Central Vermont came north from Amherst through Millers Falls to Vernon, Vermont and then on to Canada. The New York, New Haven and Hartford came from Northampton to Conway, with a branch line from South Deerfield to Turners Falls. The Fitchburg Railroad (B&M) passed east-west from Boston through Greenfield to the Hoosac Tunnel and points beyond.

*There is an error on this charming old map: it shows two rail lines along the Deerfield River going westerly to Shelburne Falls. But there was only one, the B & M. The NY, NH & HRR never had a rail line north of Conway.*

JANUARY 2010						
S	M	T	W	T	F	S
					1	2
3	4	5	6	7	8	9
10	11	12	13	14	15	16
17	18	19	20	21	22	23
<del>24</del> 31	25	26	27	28	29	30

FEBRUARY 2010						
S	M	T	W	T	F	S
	1	2	3	4	5	6
7	8	9	10	11	12	13
14	15	16	17	18	19	20
21	22	23	24	25	26	27
28						

MARCH 2010						
S	M	T	W	T	F	S
	1	2	3	4	5	6
7	8	9	10	11	12	13
14	15	16	17	18	19	20
21	22	23	24	25	26	27
28	29	30	31			

APRIL 2010						
S	M	T	W	T	F	S
				1	2	3
4	5	6	7	8	9	10
11	12	13	14	15	16	17
18	19	20	21	22	23	24
25	26	27	28	29	30	

MAY 2010						
S	M	T	W	T	F	S
						1
2	3	4	5	6	7	8
9	10	11	12	13	14	15
16	17	18	19	20	21	22
<del>23</del> 30	<del>24</del> 31	25	26	27	28	29

JUNE 2010						
S	M	T	W	T	F	S
		1	2	3	4	5
6	7	8	9	10	11	12
13	14	15	16	17	18	19
20	21	22	23	24	25	26
27	28	29	30			

JULY 2010						
S	M	T	W	T	F	S
				1	2	3
4	5	6	7	8	9	10
11	12	13	14	15	16	17
18	19	20	21	22	23	24
25	26	27	28	29	30	31

AUGUST 2010						
S	M	T	W	T	F	S
1	2	3	4	5	6	7
8	9	10	11	12	13	14
15	16	17	18	19	20	21
22	23	24	25	26	27	28
29	30	31				

SEPTEMBER 2010						
S	M	T	W	T	F	S
			1	2	3	4
5	6	7	8	9	10	11
12	13	14	15	16	17	18
19	20	21	22	23	24	25
26	27	28	29	30		

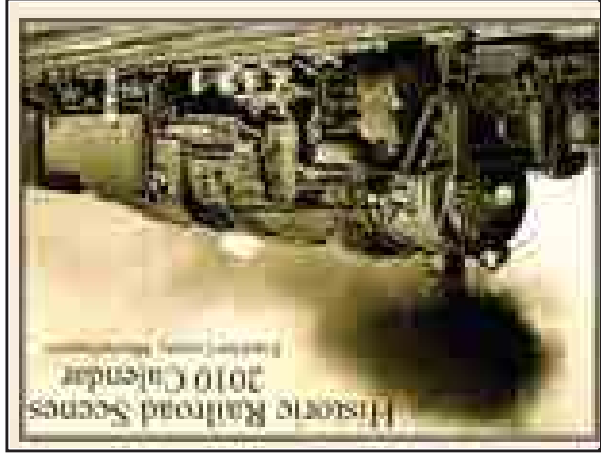
OCTOBER 2010						
S	M	T	W	T	F	S
					1	2
3	4	5	6	7	8	9
10	11	12	13	14	15	16
17	18	19	20	21	22	23
<del>24</del> 31	25	26	27	28	29	30

NOVEMBER 2010						
S	M	T	W	T	F	S
	1	2	3	4	5	6
7	8	9	10	11	12	13
14	15	16	17	18	19	20
21	22	23	24	25	26	27
28	29	30				

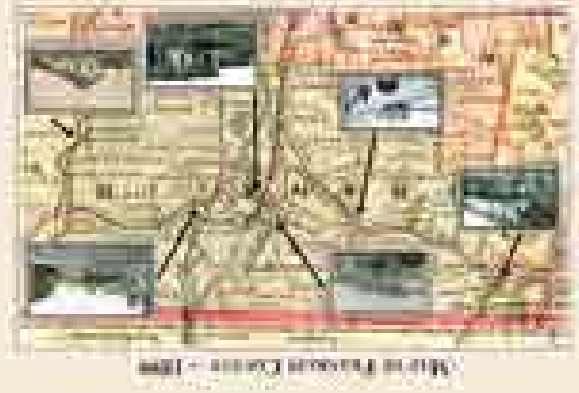
DECEMBER 2010						
S	M	T	W	T	F	S
			1	2	3	4
5	6	7	8	9	10	11
12	13	14	15	16	17	18
19	20	21	22	23	24	25
26	27	28	29	30	31	

# Historic Railroad Scenes 2010 Calendar

## Franklin County, Massachusetts



Cover: 2-10-2 Sante Fe-type No. 3027 was built in Schenectady, NY in 1923, shown here in the 1930's or early 1940's at the East Deerfield yard. Because the B&M frequently purchased utility grade coal instead of locomotive grade, when it got really wet, the stoker made a sucking sound. These engines were affectionately known as "Mudsuckers".



The included 1899 Map of Franklin County shows all the railroads and station locations.



*Railroad history researched and provided by Alden Dreyer, Shelburne, Massachusetts. Photographs courtesy of Peter S. Miller, Greenfield, Massachusetts.*

*Calendar website: [www.whist.com/railfranklin](http://www.whist.com/railfranklin)*

Printed By: Roberge Associates Land Surveying  
21 Mohawk Trail Greenfield, MA 01301  
(413)-772-2801

\$12.00